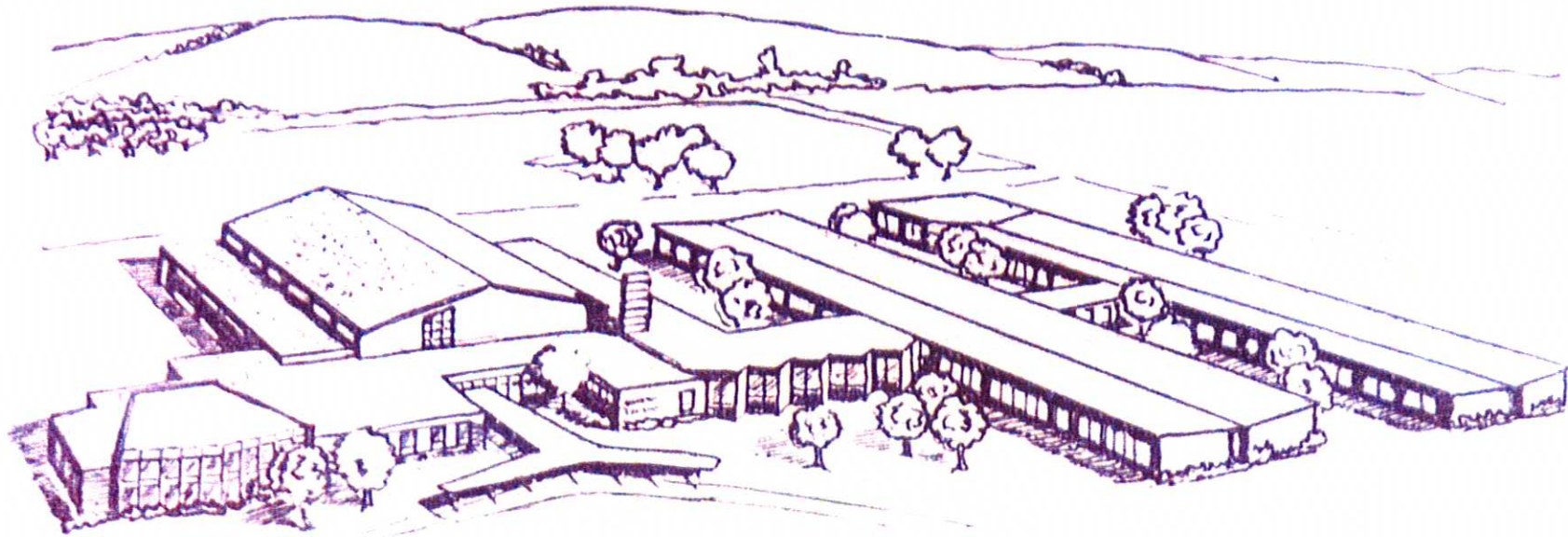


# New Campus Continues Progress At Community College



This sketch by Leon C. Goodrich and Jan Wilking, architects, depicts the new Northern Wyoming Community college campus on land given by Whitney Benefits, Inc. Whitney Benefits also gave \$250,000 to match the contribution by Count Frederic Thorne-

Rider which, with a half million dollar bond issue, made possible the new million dollar facility. The building will be ready for the opening of the 1959-60 term.

By GERTRUDE SPOMER

Northern Wyoming Community college at Sheridan, which observed its 10th anniversary last fall, is another important factor in the community's record of achievement that has earned it the All-America City Award.

The community is proud of its college and justly so for its establishment and continued growth and success are symbolic of the progress of the community itself.

The idea of inaugurating a college at Sheridan was born in the minds of several civic-minded citizens who believed, that since Sheridan was located in the heart of rich farming country, an agricultural college would be a successful venture.

The idea soon grew out of the talking stage and in mid-summer of 1948, the plan of setting up an agricultural college plus a two-mill levy for its support was put to a vote.

Following its approval, work of establishing the college gained the Northeast Agricultural Junior

college. Space for classes was provided by Sheridan School District No. 7 and were for the most part, held after school hours in the high school buildings.

John O. Goodman, a native of South Dakota who was reared in Wyoming, was the first director. He resigned at the close of the first year to accept a position on the faculty of the University of Colorado at Boulder but returned to Sheridan a few years later to again accept the directorship.

There were 74 students enrolled that first year and the first students to graduate that spring were Mrs. Don Carroll (Shirley Elstrom), and John L. Pratt of Monarch.

Classes continued to be held in high school offices the next year

and in the council chambers of the city hall as well but there was much discussion on finding a permanent home for the college as soon as possible.

Whitney Benefits contributed 80 acres of land as a permanent college site and money was raised from a number of different sources as the nucleus of a permanent building fund.

It was a touch and go business those first two years because of the difficulty in obtaining classroom space but with School District 7 as a ministering angel, college classes — and a well rounded program at that — continued satisfactorily.

In 1950, it was learned that the State Board of Charities and Reform would consent to having newly-constructed Stolt Hall at the Wyoming Girls school used temporarily by the college and the move was made in time for the 1950-1951 term.

Thomas E. Kuiper, now superintendent of the Pioneer home in

Thermopolis was the second college director and Lloyd Hultgren was the third. In 1954, with the old Sheridan County Memorial building vacated, the college was moved to those quarters, again under the leadership of Goodman. Richard E. White became the director four years ago upon resignation of Goodman who has returned to teaching in Connecticut.

From there on, the college story is a more familiar one, even to newcomers in the community.

In 1957, Count Frederic Thorne-Rider offered a gift of \$250,000 for college building construction. This was matched with another \$250,000 from Whitney Benefits, both gifts with the provision that the community college district bond itself for an amount equalling the two donations.

The vote passed by an overwhelming majority that spring and a Casper architectural firm, op-

erated by Leon C. Goodrich and Jan Wilking, immediately started work on plans.

Some six months later, bids were let with N. A. Nelson Construction company of Sheridan having the lowest offer. Construction was inaugurated last summer and is progressing well, and the building is expected to be ready for occupancy by the time the 1958-1960 term opens.

Located on Whitney Benefits, Inc., land a short distance south of the city limits, the new college building is one-story in height, and of masonry construction.

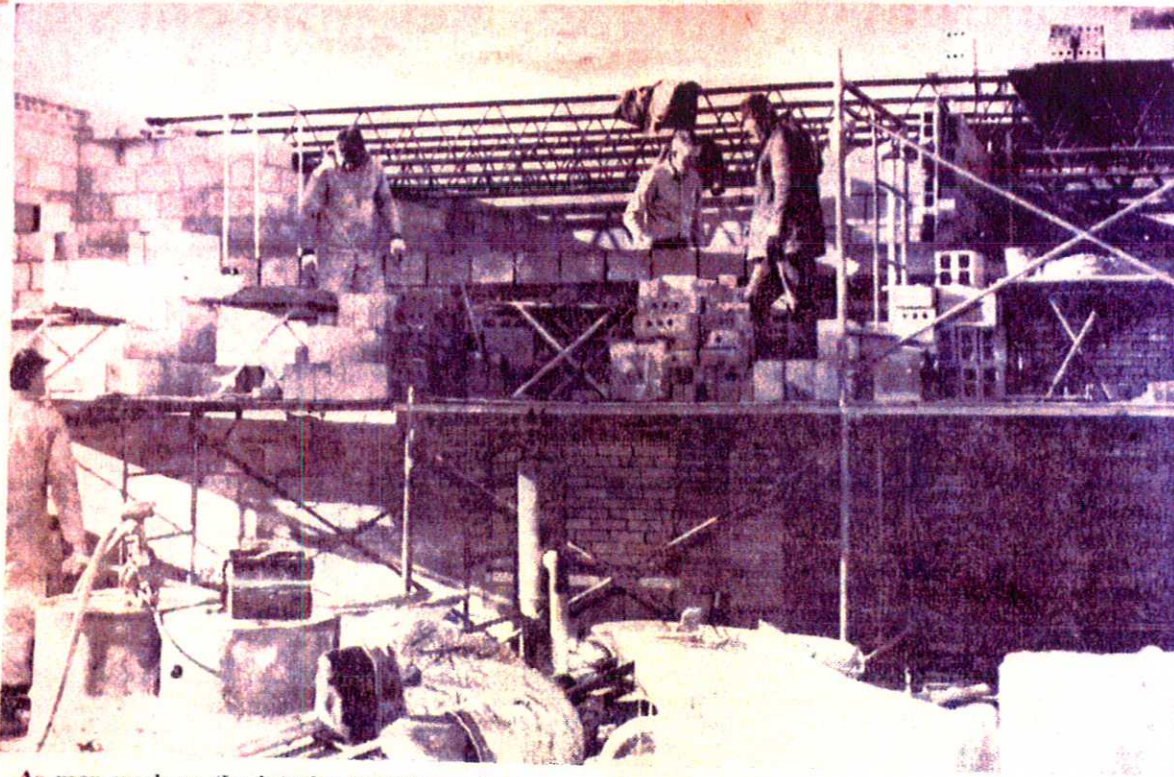
It will include a gymnasium, showers and dressing rooms and a combination student lounge and cafeteria.

A combination music and lecture room is planned, along with administration offices and offices for the faculty, a large library, home economics room and 23 laboratory-

Continued on Page 8



## Construction Continues At College Site



As men work on the interior installing wiring, heating, floors and wall finish, brick layers at the new community college building site take advantage of favorable weather to complete the outside of the structure. Located on Whitney

land south of Sheridan, the new Northern Wyoming Community college building will be completed and ready for use in September. (Press photo by Vern Shelton).

## College To Have New Campus In Fall

Continued from Page 6

classrooms including the gymnasium and music room.

There will be two laboratories for chemistry, a science lecture room, a botany laboratory, a zoology laboratory, an art and ceramics room, soils laboratory and agriculture classroom, a drafting room, rooms for business machines, typing and accounting, nursing laboratory and four general classrooms.

Glazed and face brick will primarily make up the inside wall finish; the roof will be of pitch and gravel and the basement will

contain space for storage and boiler rooms.

The building is 402 feet in length with the east-west wing, longest in the building, totalling 257 feet.

Campus grounds will cover 26 acres. Actual construction costs will be \$770,000 plus architectural, equipment and landscaping costs.

A 290-car parking area has been approved. It will be paved at a future date but in the meantime, will be surfaced with gravel or shale.